

CRAFTSMAN[®]

**3 YEAR
LIMITED
WARRANTY**

WE BUILD PRIDE[™]

20 GAL[†]
75 L

6.5
PEAK HP^{*}

20 GALLON WET/DRY VAC

20 FT[™]
6,1m

2 1/2"
6,4 cm

CLEANING
TOOLS



CMXEVBET7656

CRAFTSMAN®

3 YEAR LIMITED WARRANTY

WE BUILD PRIDE™

20 GAL†
75 L

6.5
PEAK HP*

20 GALLON WET/DRY VAC

ON/OFF SWITCH
ON TOP FOR
EASY ACCESS

**10 FT LOCKING
PREMIUM HOSE**
WITH A WRAP AROUND
STORAGE SOLUTION

ACCESSORY STORAGE
FOR QUICK TOOL ACCESS



OVERSIZED DRAIN
EMPTY LIQUIDS FROM DRUM

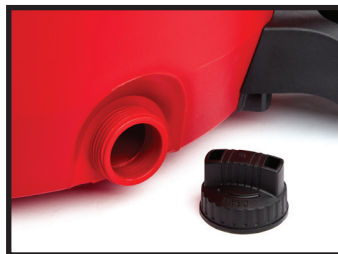


CART HANDLE
WITH ACCESSORY
STORAGE BAG

BLOWING PORT
FOR ADDED
VERSATILITY

**LARGE REAR
WHEELS AND
CASTER FEET**
FOR EASY
MOBILITY

†Gallons indicated reflect drum volume, not necessarily collection capacity. Actual capacity dependent upon type of debris collected, condition of filter, and other factors.
*Peak Horsepower (Peak Watts) represents a level at or below the maximum horsepower (watts) output of an electric motor tested in a laboratory using a dynamometer.



SPECIFICATIONS

Peak HP	6.5
Air Volume	Up to 185 CFM
Hose Length	10 FT
Hose Diameter	1 7/8"
Tank Capacity	20 GAL
Weight	25 LBS

UPGRADE FILTERS BASED ON YOUR PROJECT NEEDS:



CMXZVBE38754
(GENERAL DEBRIS)



CMXZVBE38751
(FINE DUST)
 INCLUDED



CMXZVBE38753
(ALLERGENS)



CMXZVBE38773
(LIQUIDS ONLY)

DUST COLLECTION BAGS AVAILABLE:



CMXZVBE38749
(GENERAL PURPOSE)
 INCLUDED



CMXZVBE38750
(FINE DUST)

CMXEVB17656 INCLUDES: Vac, Filter, Dust Collection Bag, Hose, Utility Nozzle, Car Nozzle, Crevice Tool, Wet Nozzle, Muffler/Diffuser, (2) Extension Wands, Owner's Manual

This brochure was downloaded from

wet-dry-vac.com

The most comprehensive source of information about wet/dry shop vacuums on the Internet!

Wet-dry-vac.com allows you to learn about how to purchase a wet/dry vac, compare and review detailed specifications on hundreds of models, and find compatible filters.

You can also view manuals, parts lists and brochures for hundreds of models. Plus, you can find the best prices for vacuums and filters, and purchase online right from the site.

